

FIG. 1

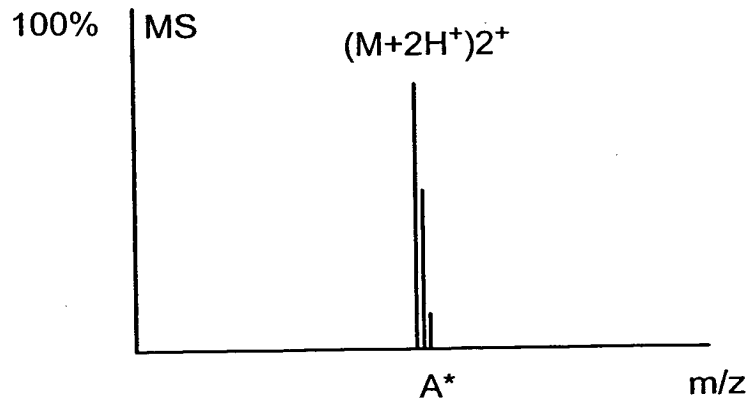


FIG. 2

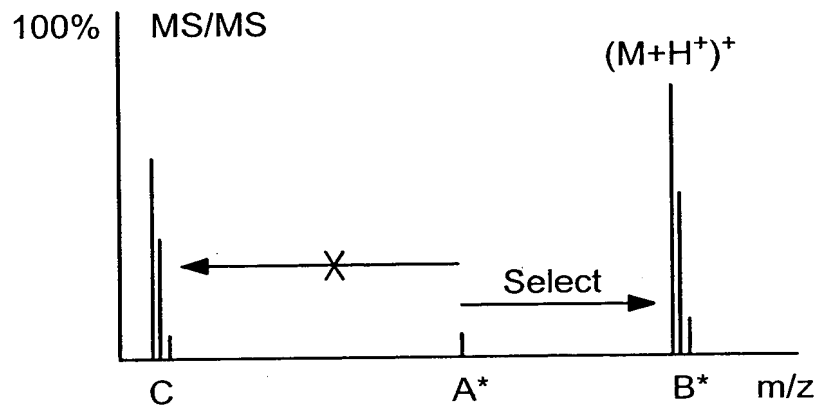


FIG. 3A

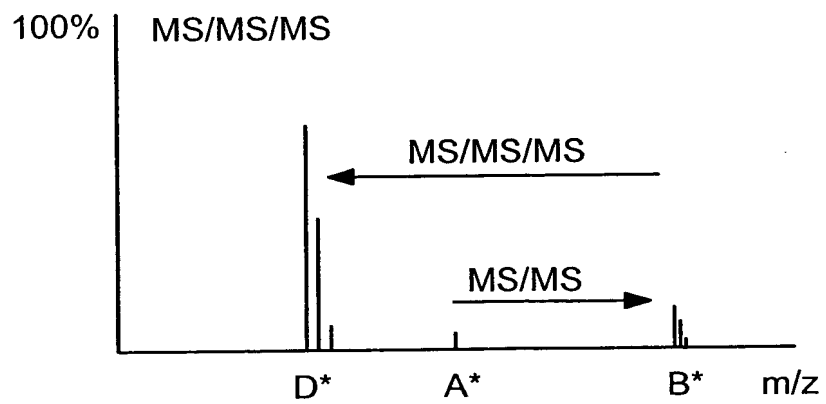


FIG. 3B

3/7

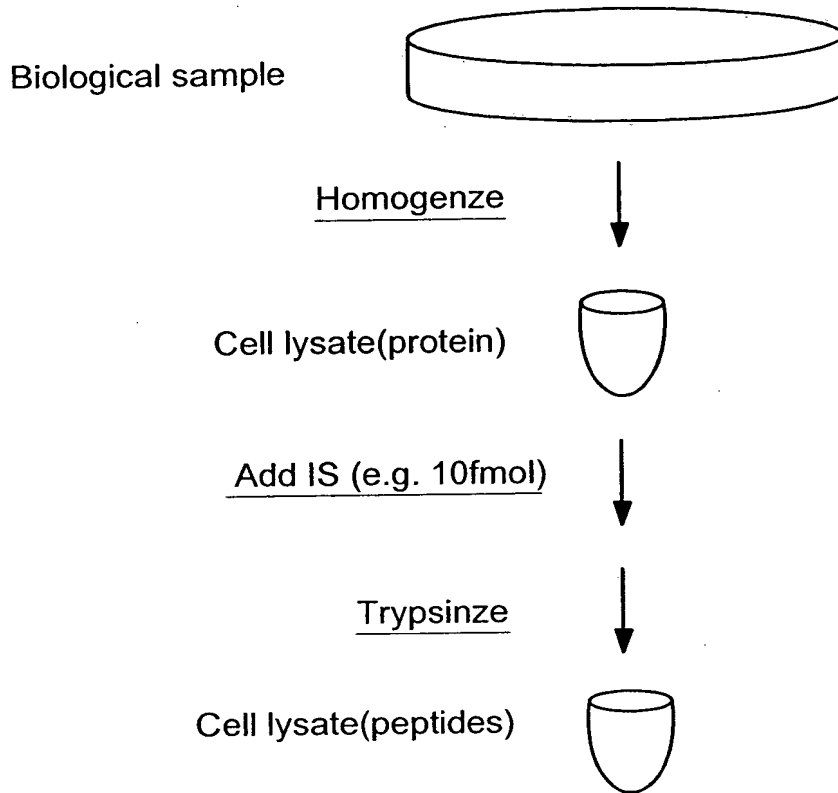


FIG. 4A

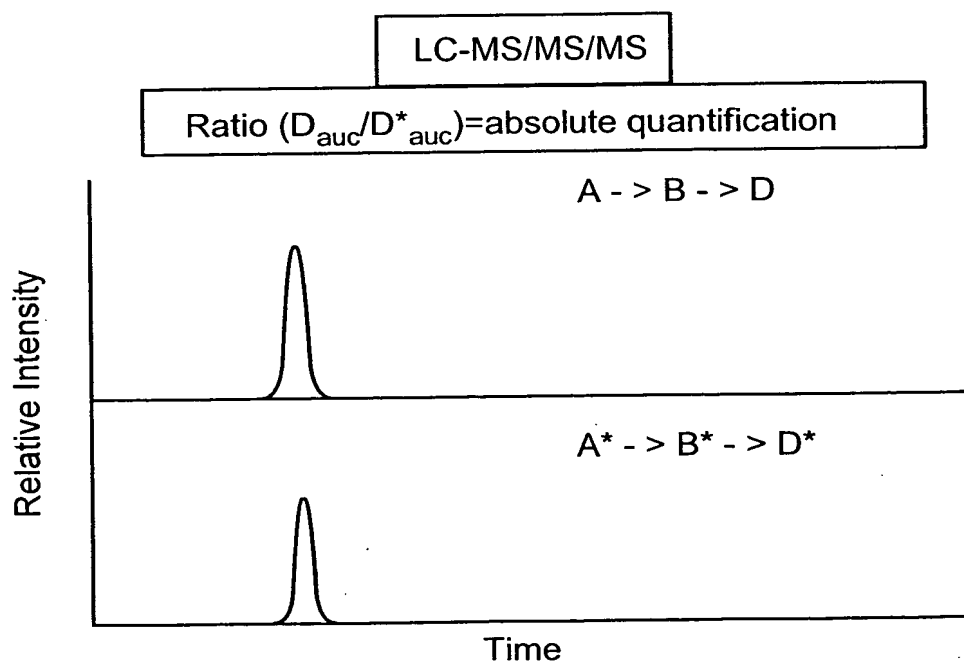
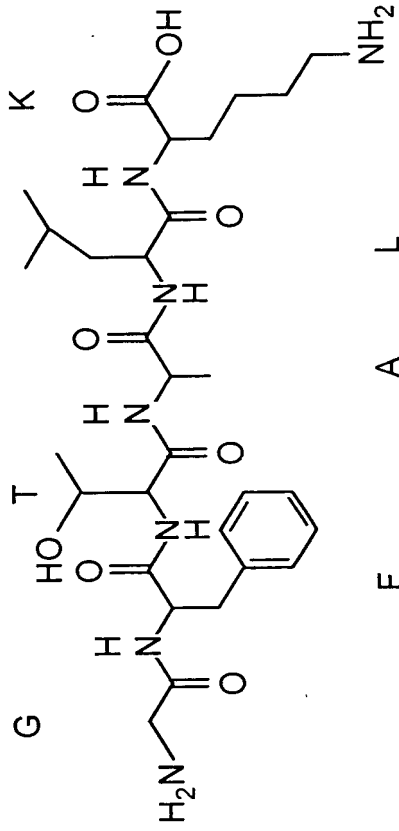


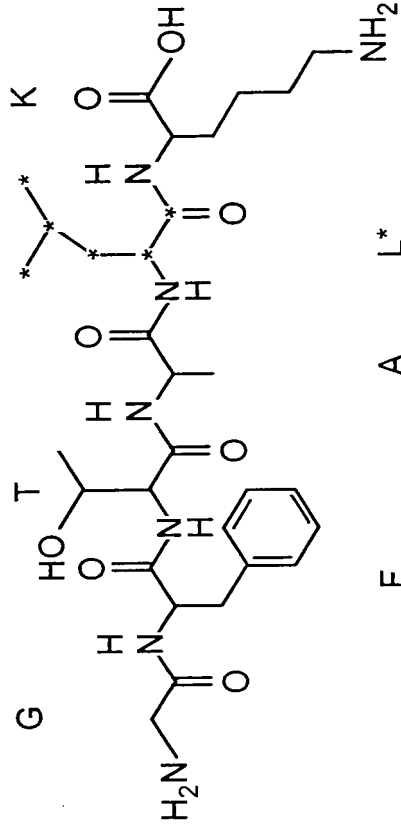
FIG. 4B



Native tryptic peptide

GFTALK

MW: 635.364



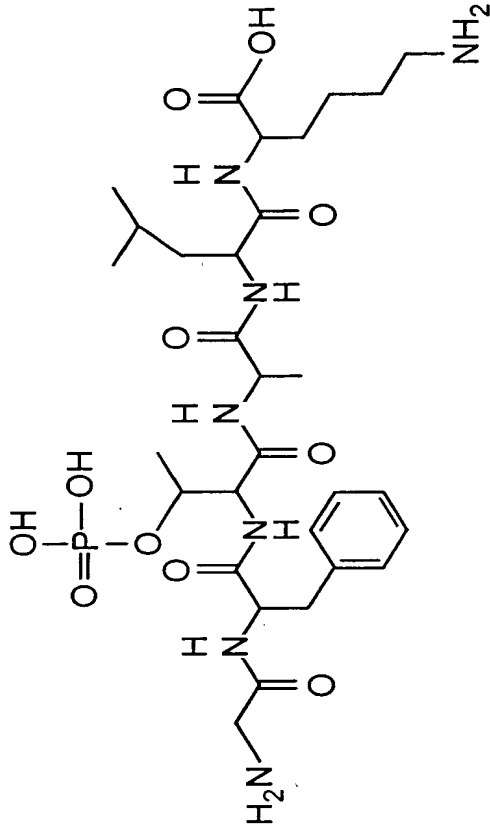
AQUA Internal Standard

GFTAL*K

MW: 641.364

* = stable isotope (e.g. ¹³C)

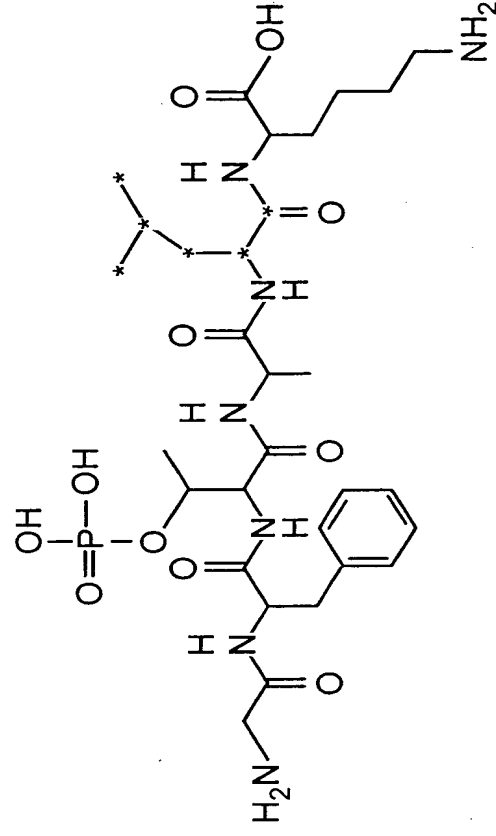
FIG. 5A



Native phosphopeptide

GF(pT)ALK

MW: 715.754

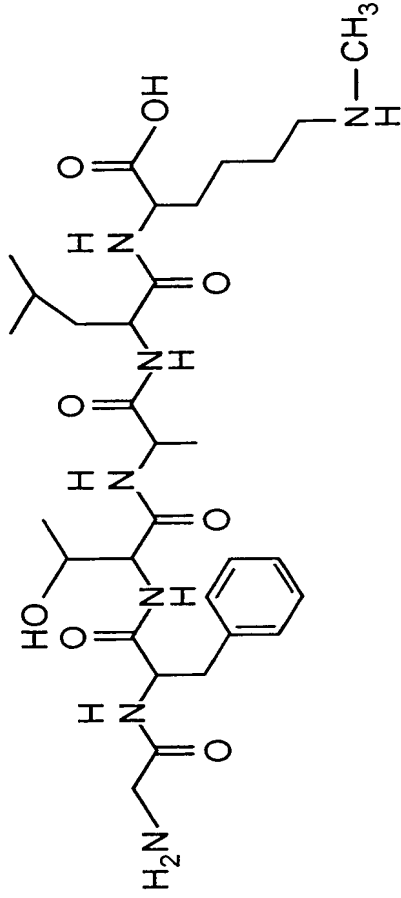
AQUA phosphopeptide
Internal Standard

GF(pT)AL*K

MW: 721.75

* = stable isotope (e.g. ^{13}C)

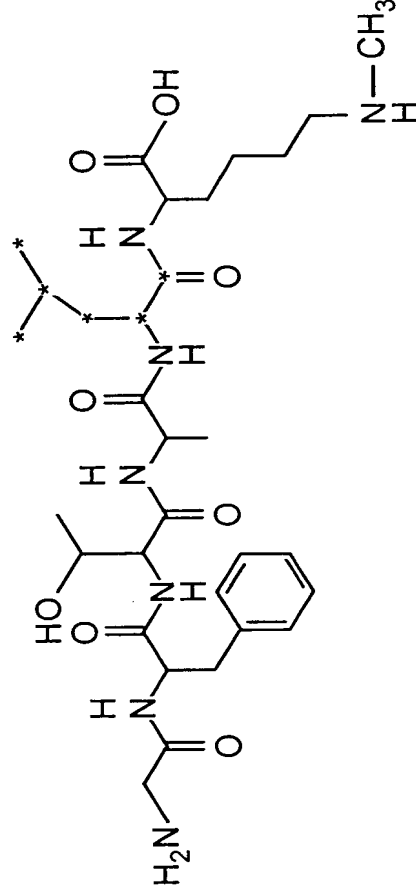
FIG. 5B



Native methylated peptide

GFTAL(mK)

MW: 649.79

AQUA methylated peptide
Internal Standard

GFTAL*(mK)

MW: 655.79

* = stable isotope (e.g. ^{13}C)

FIG. 5C

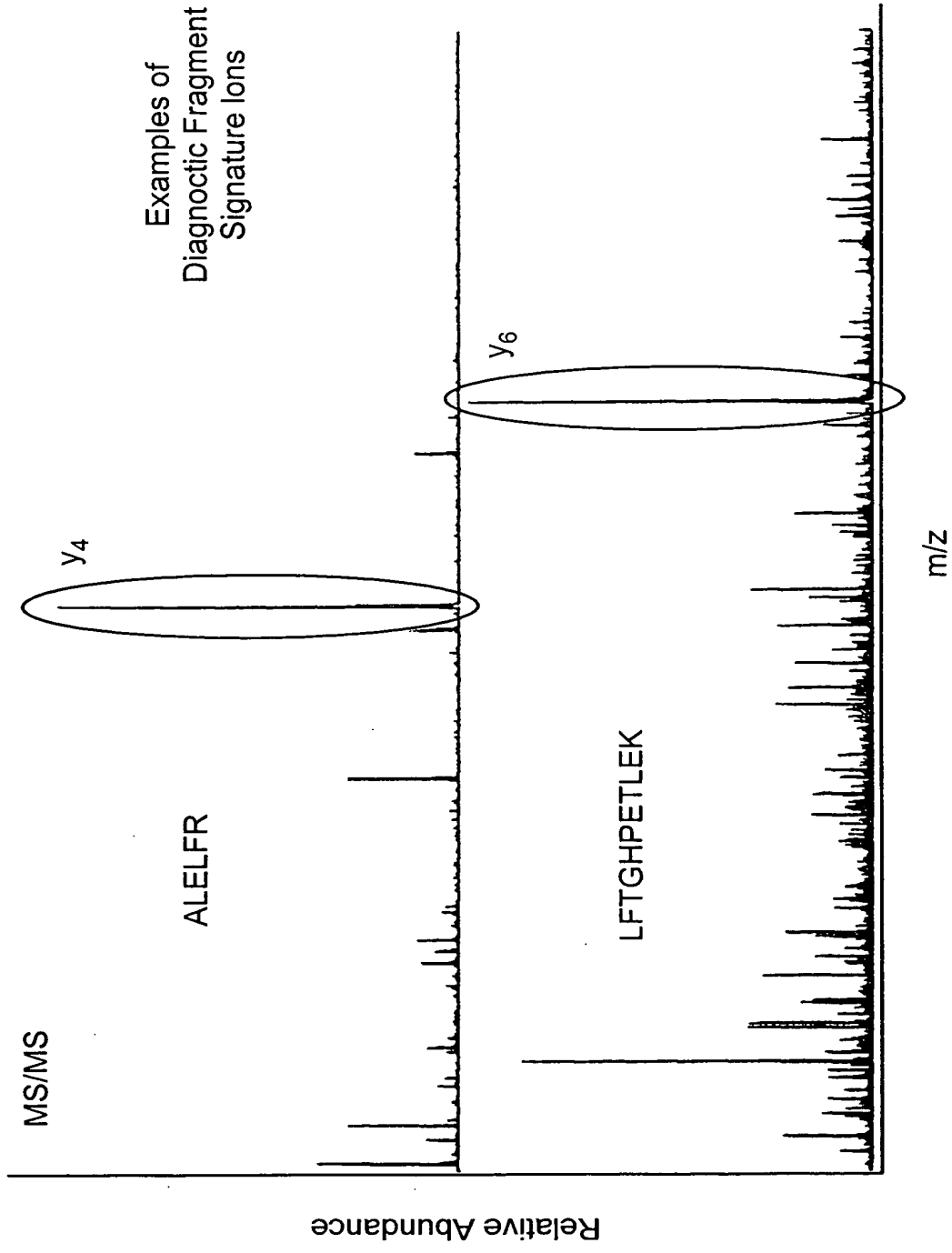


FIG. 6